



MONTHLY Report

For the month of
JANUARY
2 0 2 5



During the Reported Month, PPHI Sindh Provided the following **Free of Cost** Services

Total Number of Health Facilities Managed by PPHI Sindh

Type of Health Facility	No. of HFs
Secondary care and RHCs	46
BHU Plus	304
MCH	21
BHU	477
Others	590
Grand Total	1,438

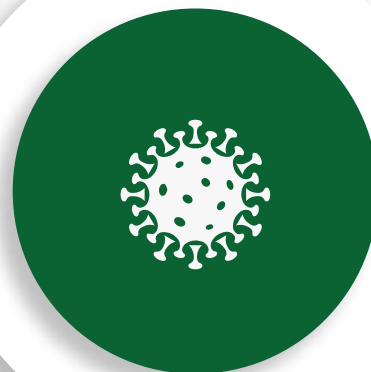


Free OPD
Services

**3.6
Million
Patients**



Malnutrition Cases
Under 5 years
**197,114
Treated**



Diarrhea
Under 5 years
68,719

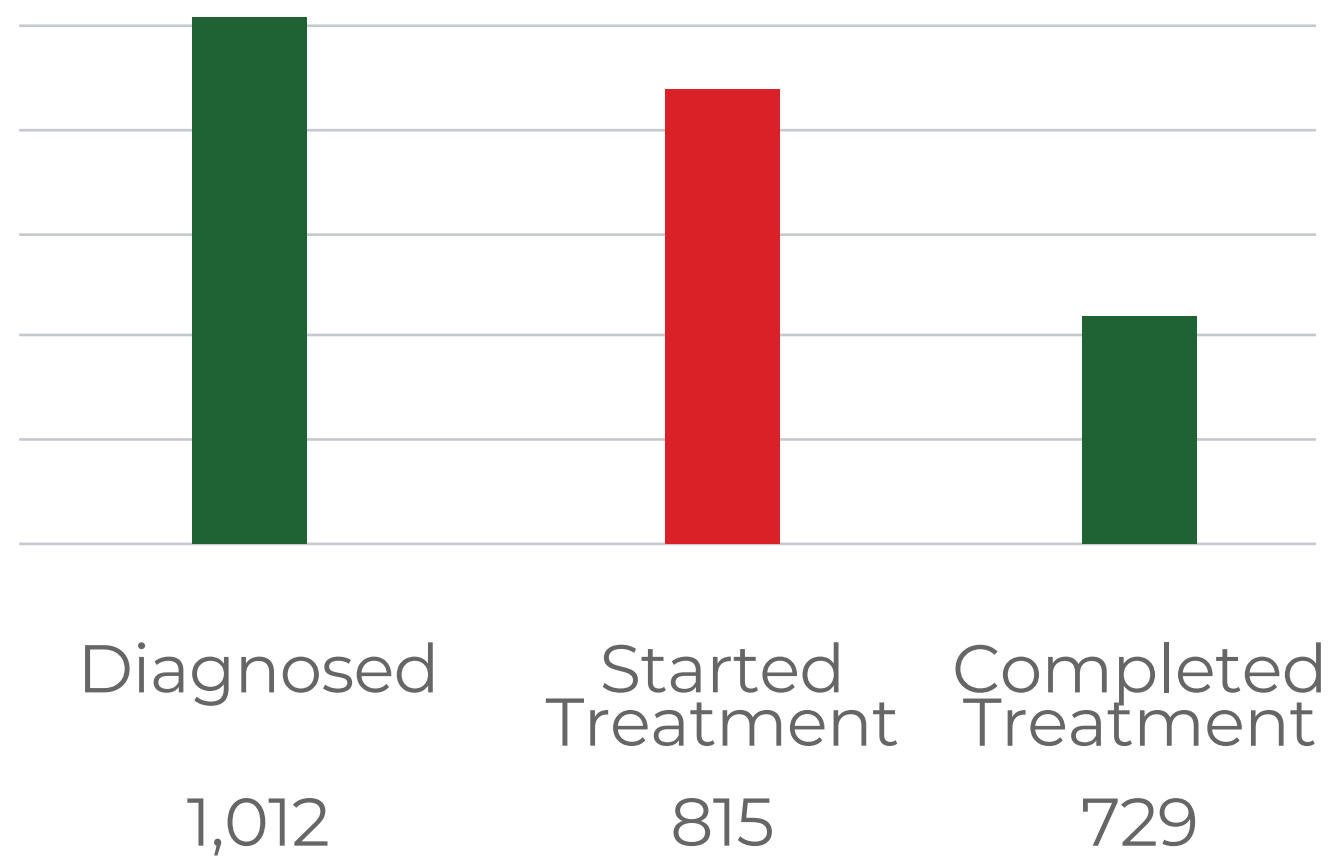


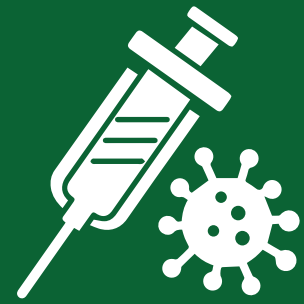
Dysentery
Under 5 years
57,235



TB
Suspects
78,281

No. of Individuals
Managed for TB

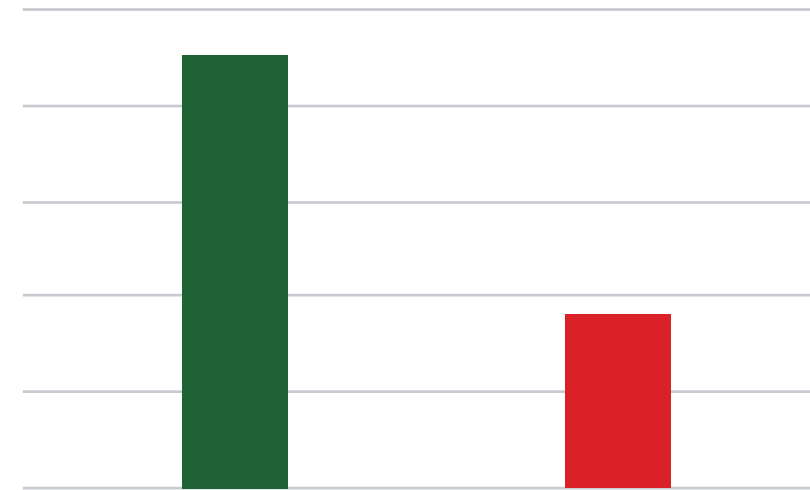




Patients
Vaccinated For
Hepatitis

262,331

No. of Individuals
Screened for HEP B, C

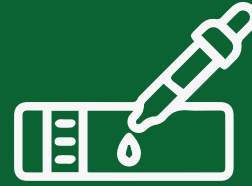


Hepatitis B	Hepatitis C
143,935	143,899



Suspected
Malaria

184,988



Rapid Diagnostic
Test (RDT)
172,318



Slides examined
13,422

No. of Individuals
Tested Positive for Malaria

MP +ve



1,131

Slides P.
Falciparum +ve
347

Sides of P.
Vivax +ve
784

Diagnostic Services, including ultrasound



1,335,849



Maternal
Health
454,985



**ANC
VISITS**

ANC-1	ANC-1 <small>Women with Hb. <10 g/dl</small>	ANC - Re Visits
71,351	30,402	215,227

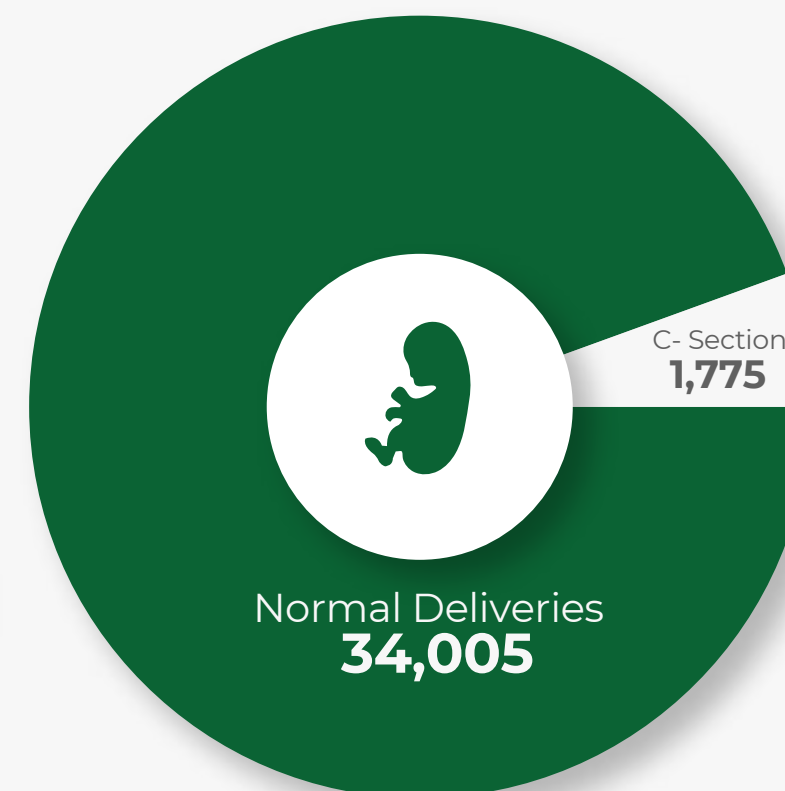


**PNC
VISITS**

PNC-1	PNC - Rev Visits
44,911	87,716



Total Deliveries
Conducted
35,780



KMC Admissions
3,241



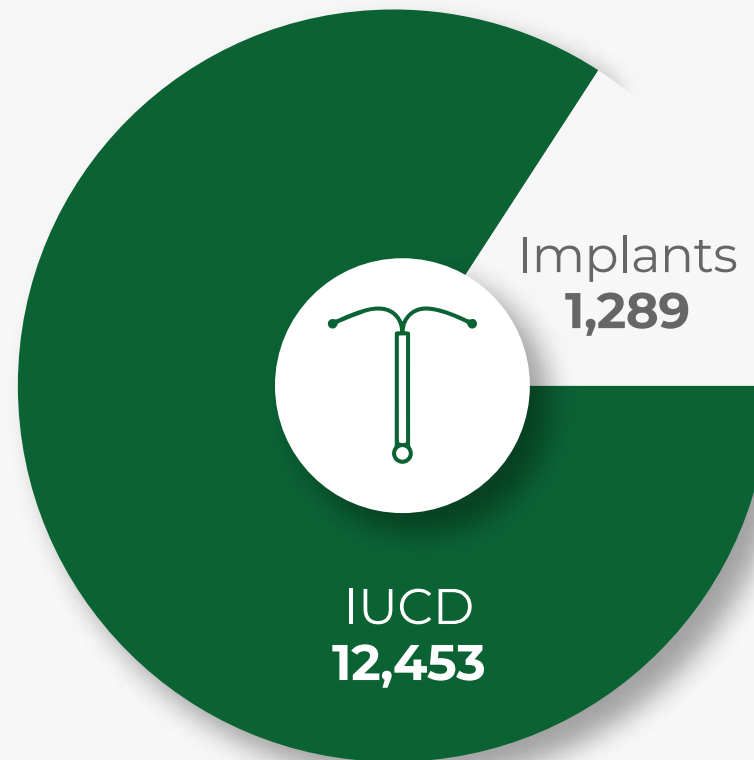
FP
Visits
106,364



LARC
13,742



Immediate
PPFP
10,443



EPI Program in Dadu and Khairpur



Total Children Fully
Immunized

11,923

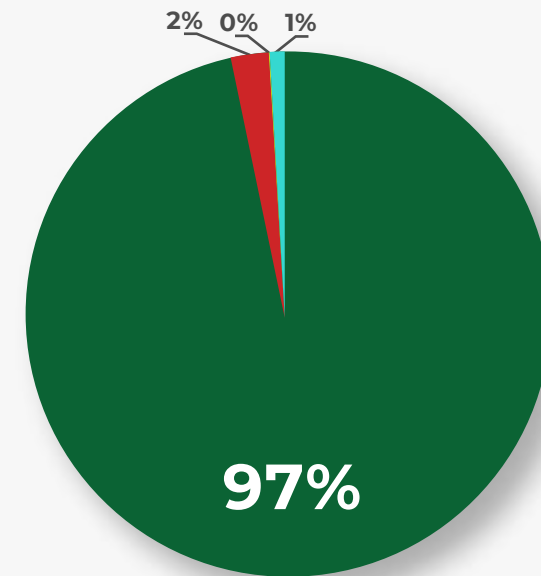


Total Birth Dose
Vaccination

11,871

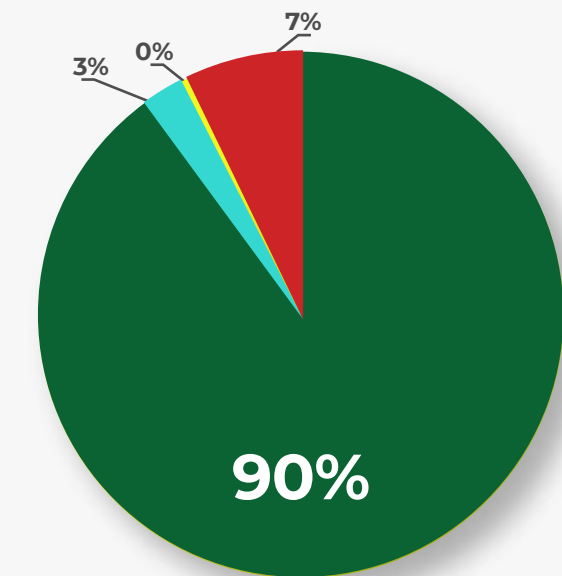
Nutrition Program Updates

OTP Key Performance Indicators



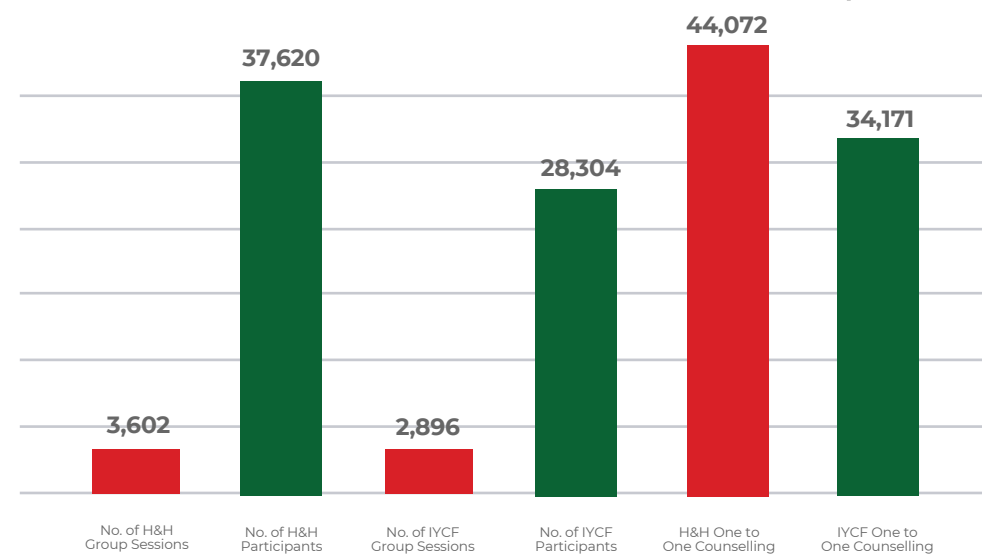
■ Cured ■ Default ■ Death ■ Non-Cured

Nutrition Stabilization Center Performance



■ Cured ■ LAMA ■ Death ■ Medical Transfer Out

Awareness Sessions & Participants



Comparative Data for RHCs and Others between the months of Jan-24 and Jan-25

Comparative Data for RHCs and Others between the months of JAN-24 and JAN-25										
Indicators	RHCs and above				BHU Plus, BHU, GDs and Others				Total	
	Jan-24	Jan-25	Difference	%	Jan-24	Jan-25	Difference	%	Jan-24	Jan-25
OPD	509,627	630,039	120,412	24	3,021,836	3,013,792	-8,044	0	3,531,463	3,643,831
FP	9,079	10,812	1733	19	89,513	95,552	6,039	7	98,592	106,364
ANC-1	10,384	12,593	2,209	21	52,693	58,758	6,065	12	63,077	71,351
NVD	4,226	5,094	868	21	27,280	28,911	1631	6	31,506	34,005
C-Sections	1,514	1,775	261	17	0	0	0	0	1,514	1,775
Lab	224,694	252,386	27,692	12	1,100,163	946,420	-153,743	-14	1,324,857	1,198,806
Ultrasound	26,428	68,156	41728	158	65,399	68,887	3,488	5	91,827	137,043
X-ray	6,941	10,250	3,309	48	1,733	1,647	-86	-5	8,674	11,897
LARC	2,055	1,984	-71	-3	13,325	3,492	1759	13	15,380	13,742